

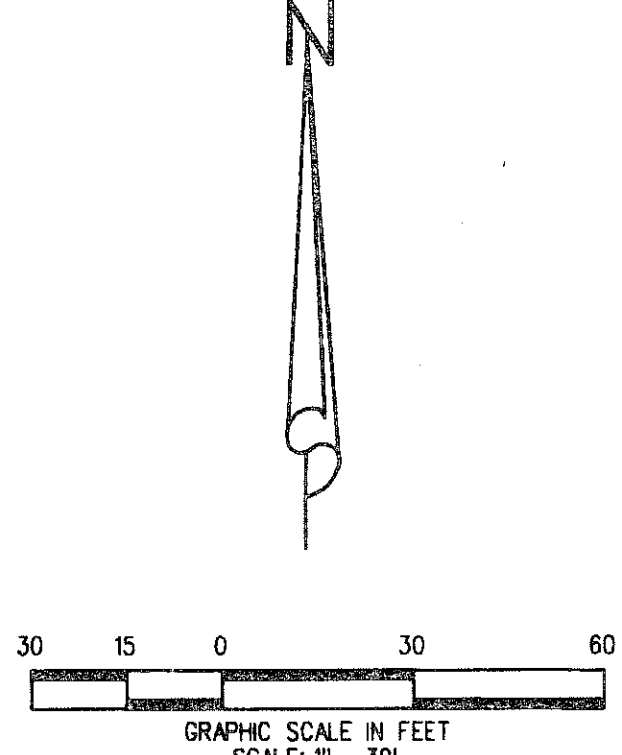
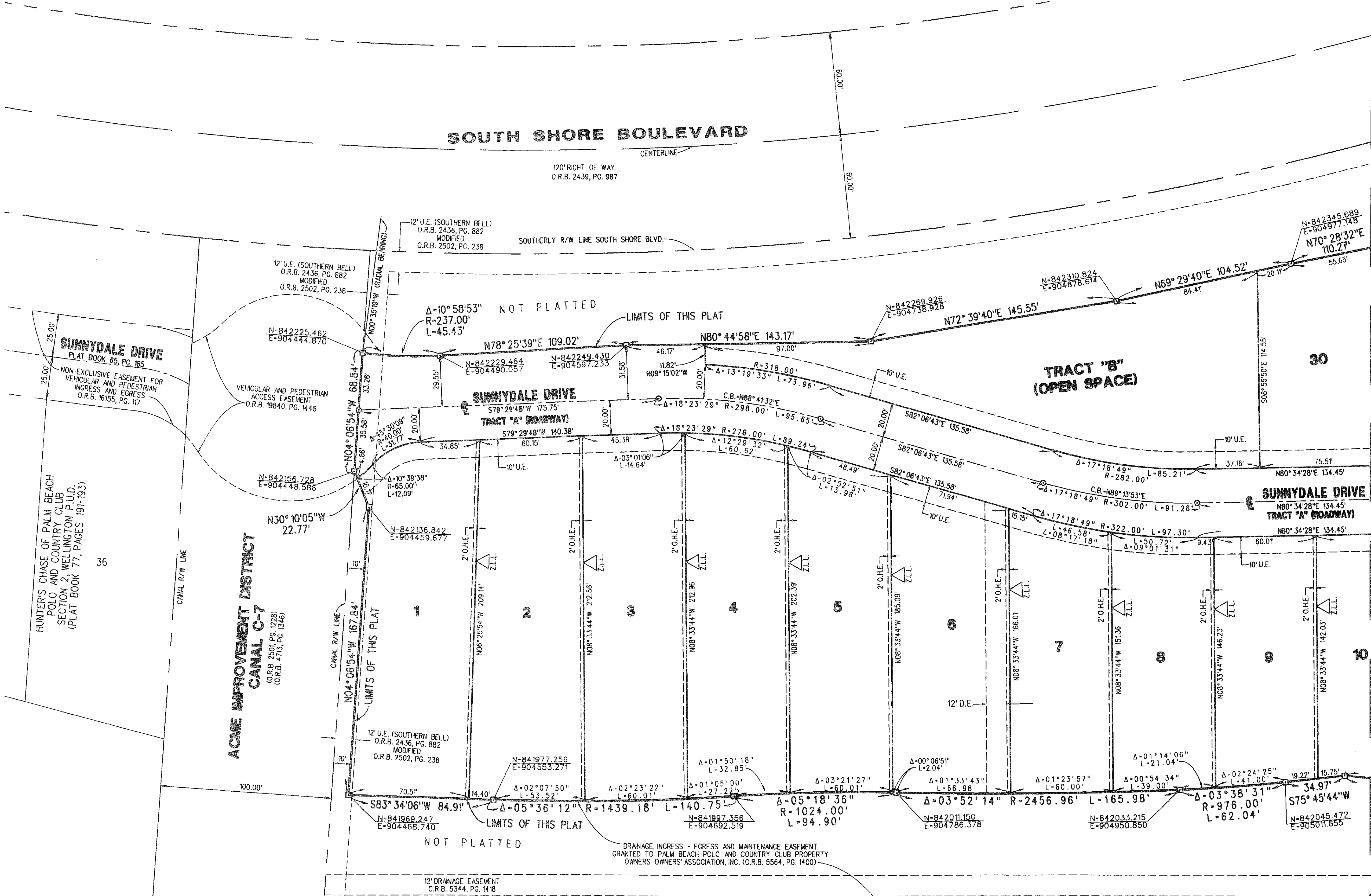
HUNTER'S CHASE OF PALM BEACH POLO AND COUNTRY CLUB SECTION 3, WELLINGTON P.U.D.

BEING A PORTION OF SECTIONS 14 AND 15, TOWNSHIP 44 SOUTH, RANGE 41 EAST,
VILLAGE OF WELLINGTON, PALM BEACH COUNTY, FLORIDA

OCTOBER 2006

SHEET 5 OF 5

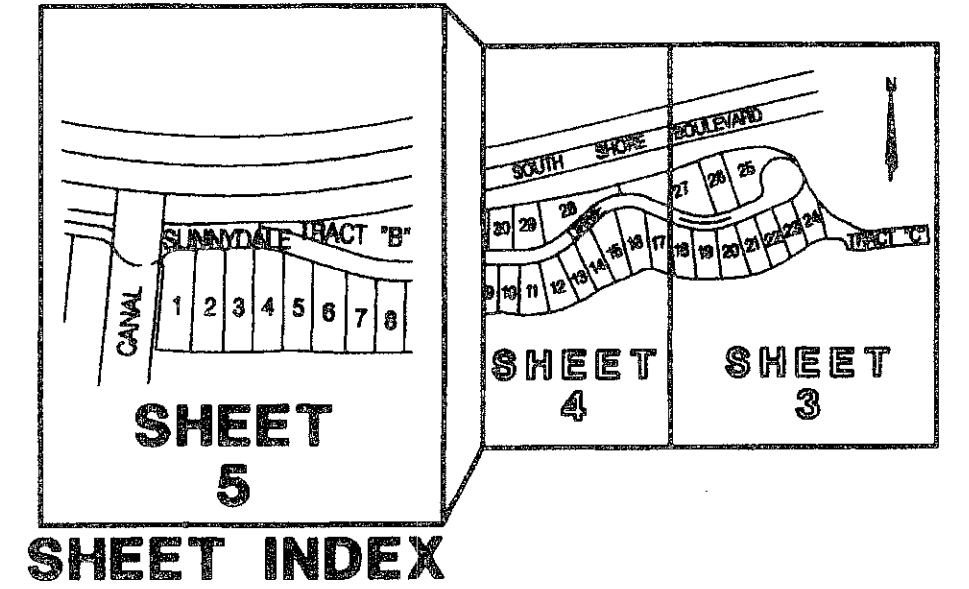
65



LEGEND / ABBREVIATIONS:

- C.L. = CENTERLINE
- C.B. = CHORD BEARING
- (GRID) = GRID DISTANCE OR BEARING
- (PLAT) = PLAT BEARING
- Δ = CURVE'S DELTA ANGLE
- D.E. = DRAINAGE EASEMENT
- L = CURVE'S ARC LENGTH
- O.H.E. = ROOF OVERHANG EASEMENT
- O.R.B. = OFFICIAL RECORD BOOK
- P.B. = PLAT BOOK
- P.O.B. = POINT OF BEGINNING
- P.O.C. = POINT OF COMMENCEMENT
- PG. = PAGE
- PGS. = PAGES
- R = CURVE'S RADIUS
- R/W = RIGHT OF WAY
- U.E. = UTILITY EASEMENT

Z.L.L. = DENOTES ZERO LOT LINE



LIDBERG LAND SURVEYING, INC.
 675 West Indiantown Road, Suite 200,
 Jupiter, Florida 33458 TEL. 561-746-8454

CD. K:\UST\154441\06-045-306\06-045-306.DGN	REF.	FLD.	FB.	PG.	JOB
		CASASUS			06-045-306
					DATE APRIL 2006
					DWG. D06-045P